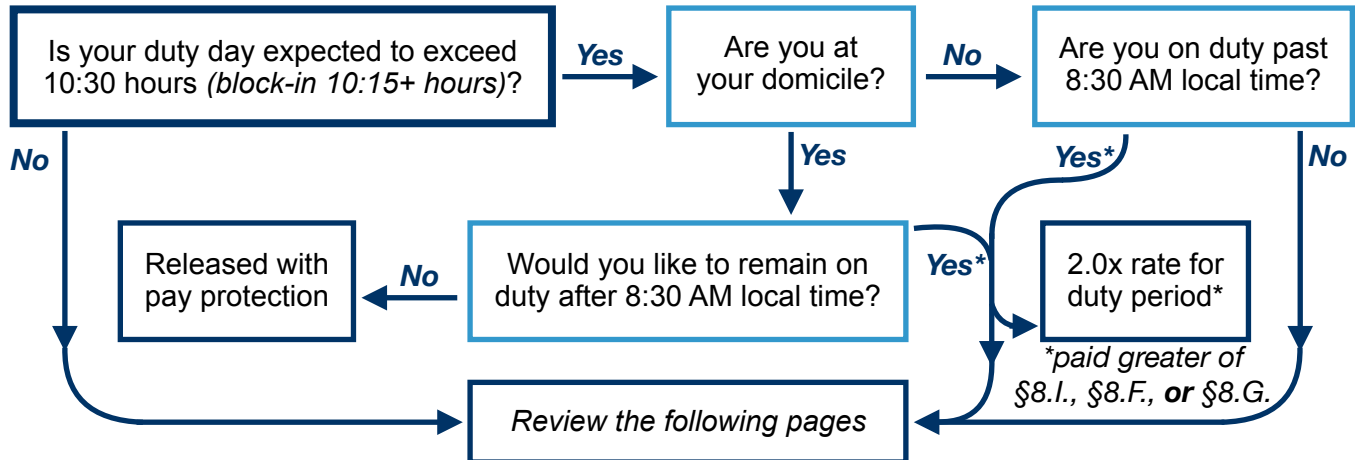


Alaska Irregular Operations (IROPs) November 29, 2025

This document outlines provisions regarding rest, duty, and pay from the 2025-2028 AFA Alaska CBA.

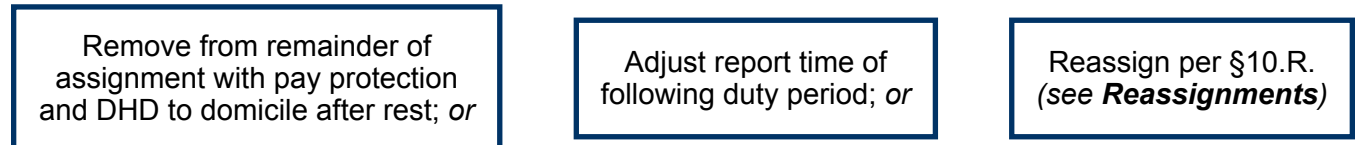
Night Rule (§8.I.)

If you are on duty at 4:29 AM *initial departure station time*



RON Rest Restored (§8.K.)

If your rest on a RON falls below minimum 10 hours, Crew Scheduling may do the following (*no loss of pay*)



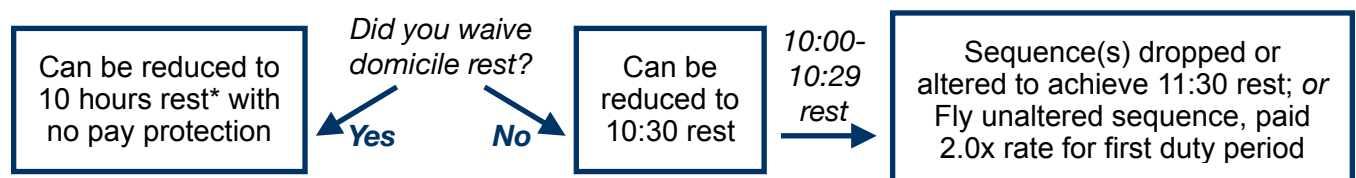
48/7 Rest (§8.L.)

If you did not waive your 48/7 rest and operationally fall below your 48/7, you may do the following



Domicile Rest (§8.M.)

If your domicile rest falls below 11:30



***§8.N. Waiver of Contractual Rest:** below 10-hour minimum after waiving rest, pulled from sufficient flights with no pay protection

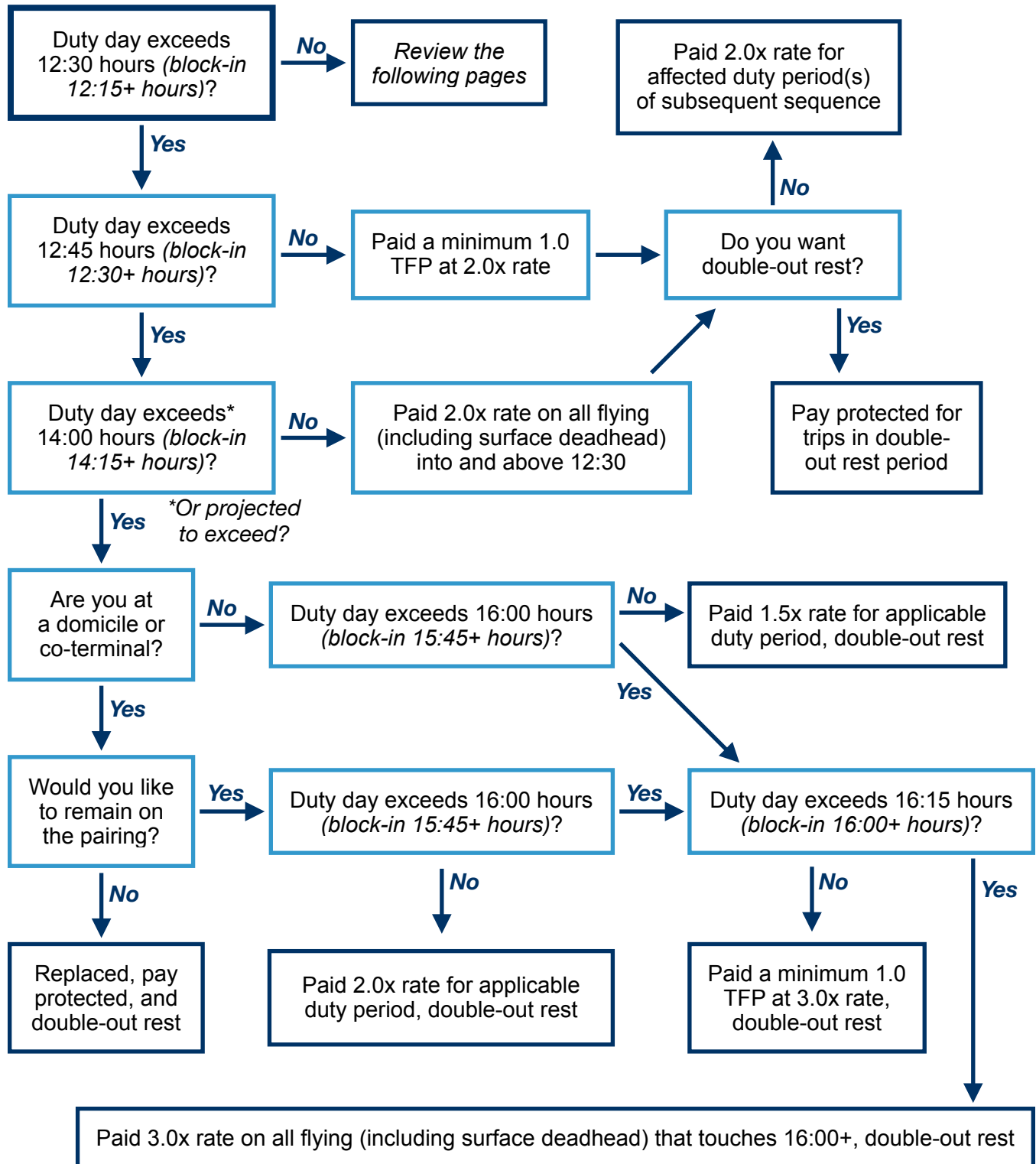
Alaska Irregular Operations (IROPs) November 29, 2025

This document outlines provisions regarding rest, duty, and pay from the 2025-2028 AFA Alaska CBA.

Over-Duty Pay (§8.F.)

14:00 Duty Provisions (§8.G.)

Double Out Rest (§8.H.)



Alaska Irregular Operations (IROPs) November 29, 2025

This document outlines provisions regarding rest, duty, and pay from the 2025-2028 AFA Alaska CBA.

Flying Into a Day Off (§10.E.)

If your duty period carries into a day off by 15+ minutes (*block-in at 12:00am or later*)

Paid a minimum of 1.6 TFP at 2.5x* rate on all flying (including surface deadhead) operating on day off

*Reserve: 2.5x above guarantee

No

Do you have **more** than the minimum* days off for the month?

*12 days in a 30-day month
13 days in a 31-day month

Yes

Paid 2.5x* rate on all flying (including surface deadhead) operating on day off

*Reserve: 1.0x toward guarantee, 1.5x above guarantee

Reassignments (§10.R.)

Pre-Cancellations (§10.S.)

Review the **Reassignments** document

Yes

Did the schedule revision occur **after** midnight on the first day of the sequence?

No

Review the **Pre-Cancellation** document

Block Delay (§21.J.1.)

Ground Delay (§21.J.2.)

- Aircraft held awaiting departure and Flight Attendant required to remain on duty (*regardless of aircraft location*)
- Actual flight time exceeds original schedule
- Aircraft diverted en route and actual flight time exceeds original schedule (*in addition to all other compensation*)

Paid 1.11 TFP per hour, prorated and rounded up to nearest 0.1 TFP (*once the delay meets or exceeds 11 minutes*)

Aircraft delay that delays a scheduled flight(s) departure time(s)

Paid 0.5 TFP per hour, prorated and rounded up to nearest 0.1 TFP (*once the delay meets or exceeds 11 minutes*)

Flying Greater than Scheduled (§21.Q.)

Review **Reassignments**, **Stranded Pay**, and **Junior Assignment (JA)** documents