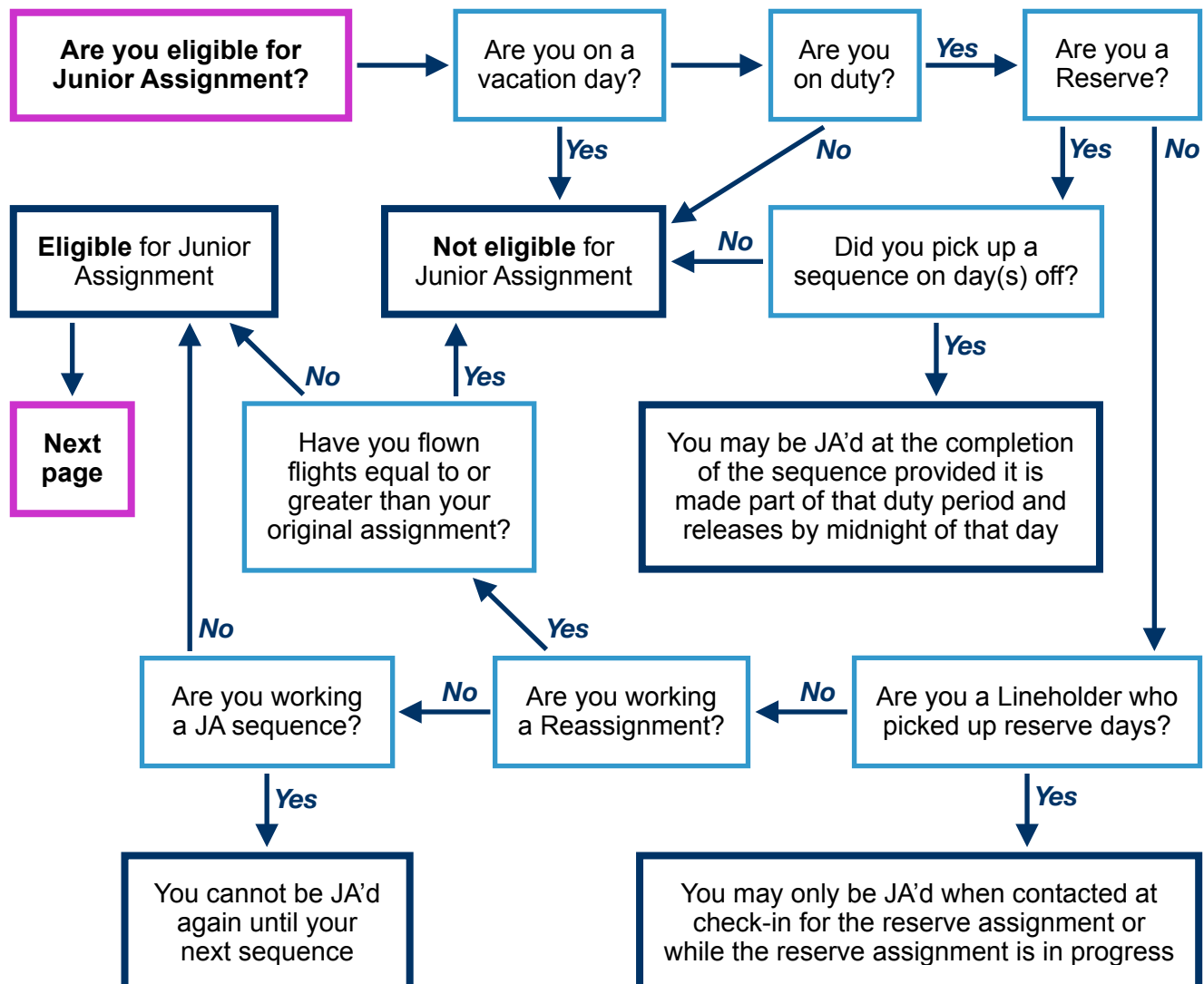


Junior Assignment (JA) is when you are required to work on your scheduled day off, or when Crew Scheduling assigns you any additional flying after a completed scheduled sequence. Such additional flights or sequences must be legally scheduled.

## Junior Assignment Contactability

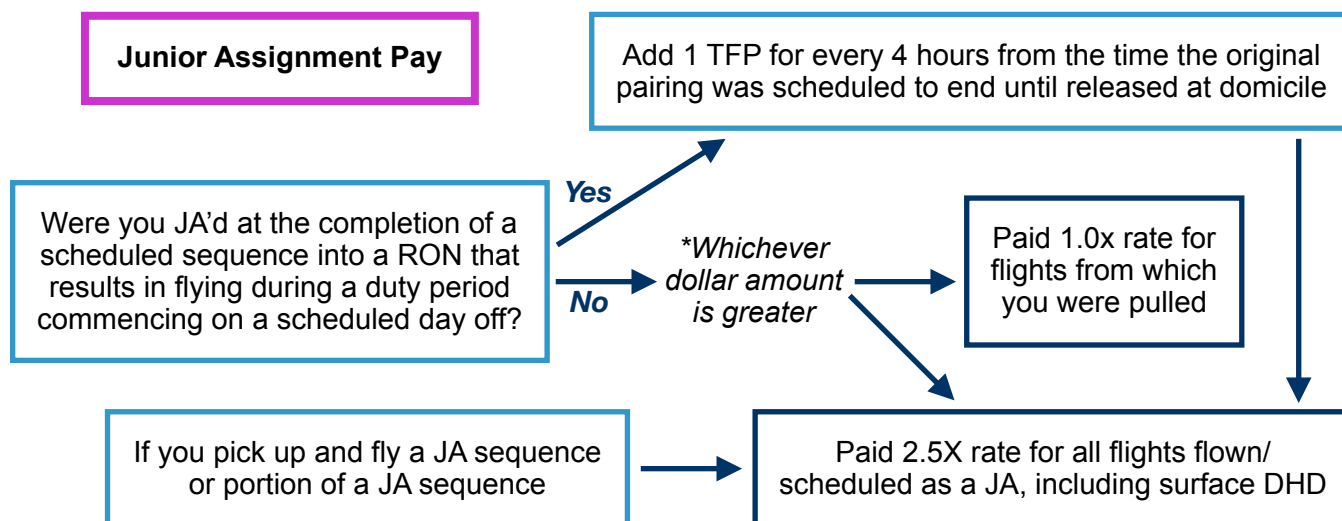
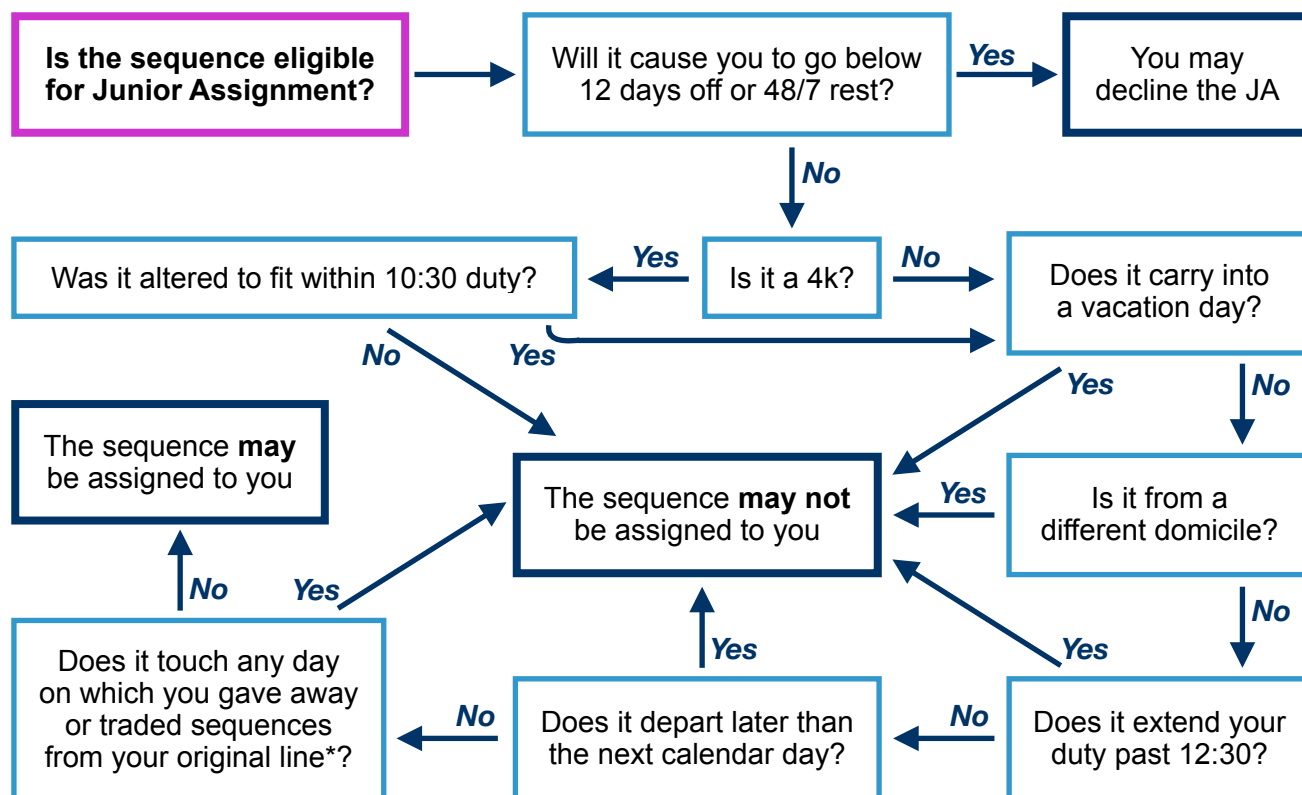
A call to your contact number(s) listed in Peoplesoft  
(between scheduled check-in and domicile release for your sequence)

A conversation with a Company employee (except Flight Attendants and pilots) or contract station personnel, on Company property or at the airport, while on duty on a scheduled day of work  
(except when deplaning exceeds the scheduled domicile debrief period of 15 minutes)



Next page

Junior Assignment (JA) is when you are required to work on your scheduled day off, or when Crew Scheduling assigns you any additional flying after a completed scheduled sequence. Such additional flights or sequences must be legally scheduled.



You will be paid no fewer TFP than immediately prior to being JA'd

If CS JA's out of order, the FA that flies the JA will be paid an additional 0.5x rate for the error. The FA who should have been JA'd will be pay protected 2.5x rate for the sequence

If your JA pairing changes when you arrive at the airport, you will be paid 2.5x rate on the scheduled or revised sequence, whichever is greater